



ACCESSORY

01 Low Pressure Dirt / Moisture Trap



Pressure Range	0 to 35 bar
Body Material	Stainless steel
Chamber Material	Acrylic
O-Rings	Nitrile
Test Port Connection	1/8" NPT or BSPP
Calibrator Connection	1/8" NPT or BSPP

Dirt/moisture traps provide an effective barrier against the transfer of moisture and dirt from an instrument under test to the sensitive piston/cylinder assembly of a pneumatic deadweight tester. Unexpected particle contamination or fluid inside the device under test will be prevented from entering the deadweight system, avoiding downtime for maintenance or repair. Designed for operation in the vertical position these traps are simple to dismantle and easy to clean. Designed to mount directly on the deadweight tester and featuring an acrylic chamber for visibility of contaminants this unit utilizes the standard test port adapters for easy instrument connections.

02 High Pressure Dirt / Moisture Trap



Pressure Range	0 to 100 bar
Body & Chamber Material	Stainless steel
Test Port Connection	1/4" Lok
Calibrator Connection	1/4" Lok

Dirt/moisture traps provide an effective barrier against the transfer of moisture and dirt from an instrument under test to the sensitive piston/cylinder assembly of a pneumatic deadweight tester. Unexpected particle contamination or fluid inside the device under test will be prevented from entering the deadweight system, avoiding downtime for maintenance or repair. Designed for operation in the vertical position these traps are simple to dismantle and easy to clean. This high pressure version is provided with an aluminum central chamber for safety and utilizes the standard test port adapters.



ACCESSORY

03 Liquid to Liquid Separator (OWS-100)



Pressure Range	1000 bar
Test Port Adapter	1/4" BSPP
Body Material	SUS 304, Viton
Diaphragm	Viton

OWS-100 is liquid-to-liquid separators connect directly to the test port of a hydraulic deadweight tester or comparison test pump. A flexible rubber diaphragm separates the fluids, protecting the calibrator from contamination and allows calibration of the device in its specific working fluid.

04 Pneumatic Multi-Test Port (TP-P Series)



	Use not Tool
	Use not plug
Test Port Channel	1,2,3,5 Ports_Standard (4,6,7,8,9,10 Ports_Custom)
Pressure Range	210 bar

Multi-Test ports are designed for expanding pressure test ports during pressure calibration. Pressure test port is used for pneumatic pressure calibration up to 210bar. There are hand-tight quick connectors pre-installed on each Test Port.

05 Hydraulic Multi-Test Port (TP-H Series)



	Use not Tool
	Use not plug
Test Port Channel	1,2,3,5 Ports_Standard (4,6,7,8,9,10 Ports_Custom)
Pressure Range	2000 bar

Multi-Test ports are designed for expanding pressure test ports during pressure calibration. Pressure test port is used for pneumatic pressure calibration up to 2000bar. There are hand-tight quick connectors pre-installed on each Test Port.



ACCESSORY

06 Pneumatic Quick-Connection Adaptor Set (CA-P Series)



Pressure Range	210 bar
Pressure Port	1/8", 1/4", 3/8", 1/2" NPT 1/8", 1/4", 3/8", 1/2" BSPT / BSPP

Quick Connection to various female hand-tight quick connectors

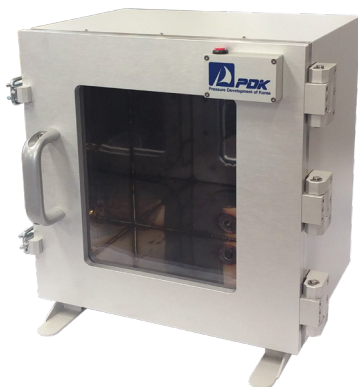
07 Hydraulic Quick-Connection Adaptor Set (CA-H Series)



Pressure Range	2000 bar
Pressure Port	1/8", 1/4", 3/8", 1/2" NPT 1/8", 1/4", 3/8", 1/2" BSPT / BSPP

Quick Connection to various female hand-tight quick connectors

08 Barometer Calibration Chamber (BCC-1200)



Calibration range	0 ~ 1.2 bar a
Inside Size	350 mmW × 250 mmD × 350 mmH
Out Size	380 mmW × 291 mmD × 405 mmH
Weight	30 kg

BCC-1200 is chamber for barometer calibration. It can be calibrated very quickly by simple opening and closing and easy to identify the internal pressure gauge value by LED light in BCC-1200. It equipped relief valve and passed pressurized and vacuum test for safe and robust using.



ACCESSORY

09 High Pressure Flex Tubes (FT Series)



length	30 to 300 cm
Working pressure	High up to 630 bar
	Low up to 50 bar
Burst pressure	High 2000 bar
	Low 100 bar
Connection	
A	High 1/4" Lok (Compatible with Swagelok)
B	High 1/4" Quick (Compatible with Swagelok)
C	High 3/8" Quick (Compatible with Swagelok)
D	High 1/2" Quick (Compatible with Swagelok)
E	High AN4 (7/16" UNF, 37° Flare)
H	High 9/16" UNF Cone & Threaded (Collar & Gland included)
T	Test Coupling (DIN2353, M16 x 2)

ex) FTH-300-A (300cm Length, Both side High pressure 1/4" Lok type)
FTH-300-A-B (300cm Length, One side 1/4" Lok•High pressure 1/4" Quick type)

10 High pressure nipple (HN-6 Series)



Length	6 to 100 cm
Working Pressure	4136 bar (60000 psi, Max)
Connection	1/4" Left Screw End 9/16" UNF Cone & Threaded

ex) HN-6-10 (10cm Length, Both side Collar Gland 2 set)

11 Pointer Remover



This tool is designed to quickly remove and consistently refit the pointer of a pressure gauge.



ACCESSORY



12 Pneumatic Quick Connector (CA-P-B / CA-P-S)

Quick Pneumatic Connectors for Easy and Quick Connections

Pressure Range	3,000 psi (210 bar)
Pressure Port	1/4" Lok



13 Hydraulic Quick Connector (CA-H-B / CA-H-S)

Quick Hydraulic Connectors for Easy and Quick Connections

Pressure Range	2000 bar
Pressure Port	1/4" BSPP



14 Medium Pressure Inspection Facility

Used for intermediate check of pneumatic and hydraulic pressure gauge
Provides software that displays the piston drop rate as a yes
Laser distance sensor height adjustment



ACCESSORY



15 Intercomparison Calibration

Used for calibrating pneumatic and hydraulic pressure gauge

Range	Up to 200 bar with pneumatic
	Up to 5000 bar with hydraulic

Software for data collection

Can also be used for intermediate inspection of pressure fields

Laser distance sensor height adjustment and pressure piping provided